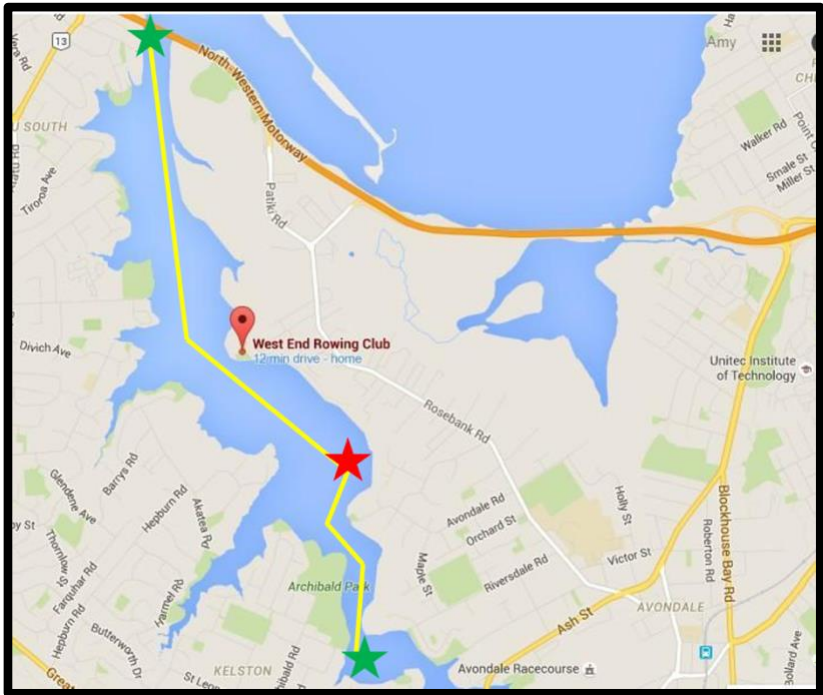


# Maps

## Maps of Important Locations

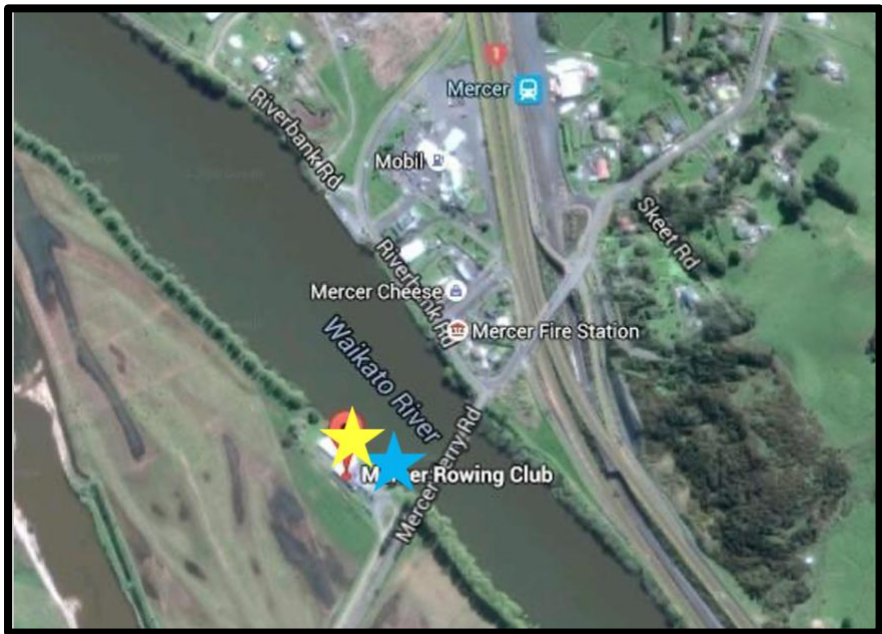
### WEST END ROWING CLUB BOAT HOUSE AND WATERWAY – 26 SAUNDERS PLACE



The Whau River estuary is our waterway, and the rowing line is indicated in yellow. Towards high tide we have approximately 5km of water from the bridge to the “green shed” (indicated by the green stars). At low tide we have from the bridge to the red star.

When it is flat, and we need to get in more distance we can also venture out into Waitemata Harbour.

### WEST END BOAT SHED AT MERCER AND MERCER ROWING CLUB



The Mercer shed (yellow star) is located on the banks of the Waikato River, alongside the Mercer Rowing Club boat house (blue star). Coming from Auckland on SH1 take the exit at Mercer and turn right at the top of the off ramp. Continue straight ahead over the bridge

## LAKE PUPUKE REGATTA SET UP

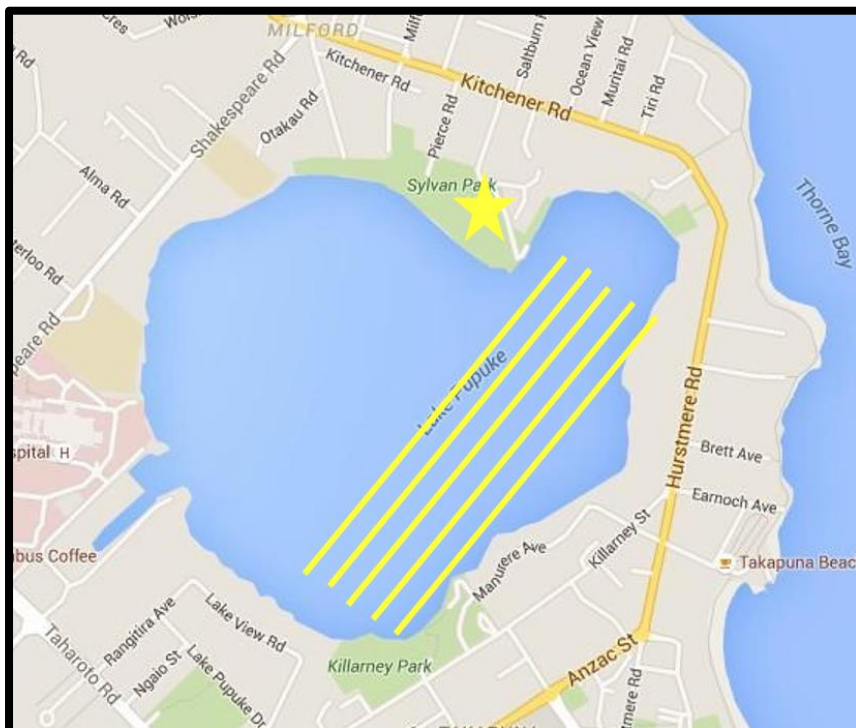


Lake Pupuke is in Takapuna on the North Shore. The boat park is set up in Sylvan Park (yellow star).

Parking at regattas is difficult to find and there are strict restrictions on parking in this residential area. No parking is allowed on Sylvan Park Ave (but drop off is allowed) so you need to find parking on Kitchener Road, or one of the other surrounding side streets and walk down to Sylvan Park.

It is recommended to arrive early to avoid a long walk to and from the boat park!

## LAKE KARAPIRO PARKING AND ACCOMMODATION



Lake Karapiro plays host to most of the major regattas throughout the season.

Public parking is available at gate 3 (red star) – there is a parking fee which is usually \$5 per car per day. For multi-day regattas they often offer a weekend pass to save you bringing cash each day.

The West End trailers are usually allocated to sit in the Don Rowlands carpark shown by the blue star.